


agiplan 

gedacht. getan.



Understanding and enthusing customers

agiplan 

The most varied of problems experienced by our customers – new business activities, competitive pressure, increased complexity in day-to-day business or global supply relationships – are our challenges. Our incentive is to be your competent partner.

As an independent consulting and planning company we deliver tailor-made solutions to industry and public authorities.

Thought. done. Our corporate philosophy stands both for creative concepts and implementation skills with professional project management. We are characterised by integrated thinking and a love of projects.

agiplan provides two main services – Industrial Consulting and Public Management. Our customers are both medium-sized companies and large corporate groups.

We advise on optimization as well as complex new plans.



Services



Factory & Production



Logistics & IT



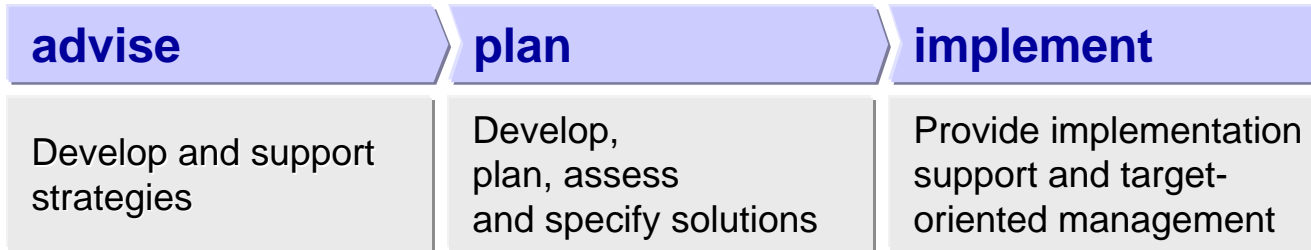
Project Management



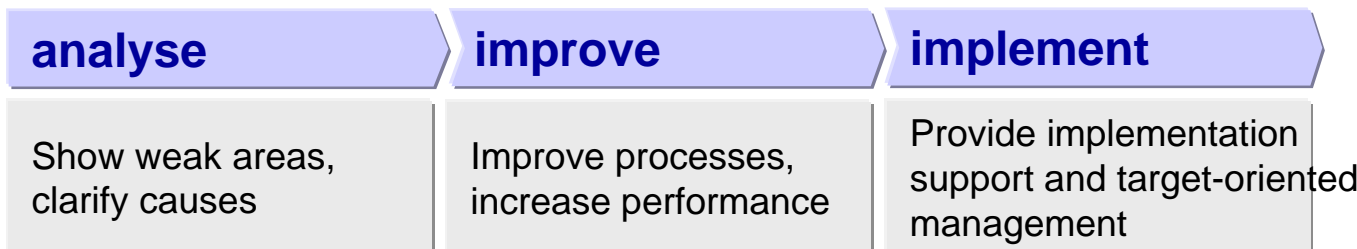
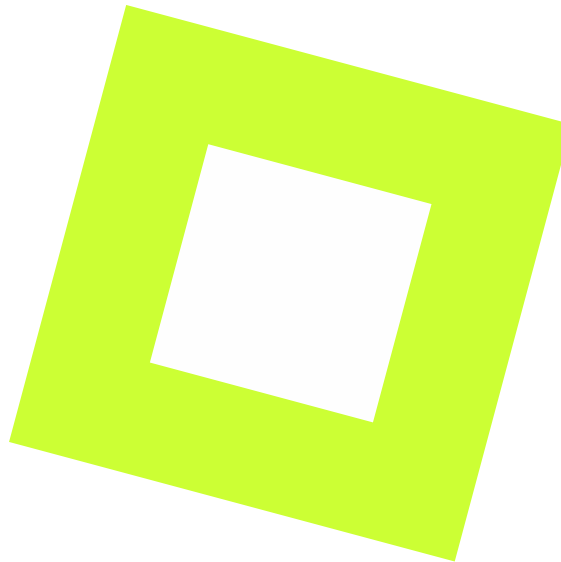
Commercial & Public Services



Step by step towards the goal



Plan the new



Improve the existing



Design companies

Production strategies to establish companies and networks, structure the production, design value flows and improve process costs

Develop factories and improve performance

Assess and improve factory performance using lean management methods

■ Location strategies

Develop location strategies in the production network, location searches and assess brown/ green field solutions

■ Plant structure planning

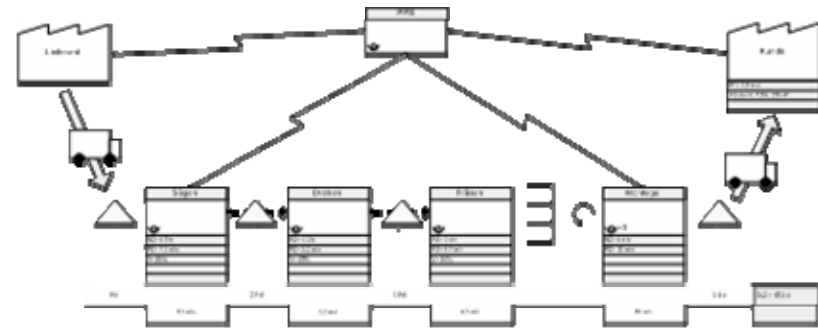
Analyse and develop plant structures for existing and new factories, layout and material flow planning, simulating factory systems

■ General planning of buildings

General planning with architecture, technical building features, supporting structure and external areas incl. construction management, resource efficiency as per Green Building Standard

■ Production technology

Improve production and assembly processes, define production technologies as well as planning, procurement and approval of resources



Manage supply chain

Design and improve efficiency of logistical supply chains to achieve best practice

Increase logistics performance

Assess and improve logistics performance using lean management methods

■ Procurement and distribution logistics

Develop procurement / distribution strategies and design slim supply processes

■ Production logistics

Internal material flow and provision planning as well as production and material flow control

■ Intra-logistics

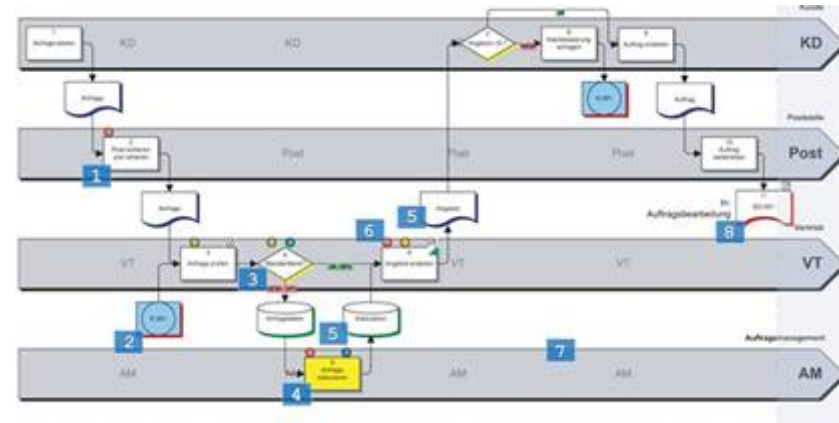
Design and implement material flow, transport, warehousing, pick-and-place systems

■ Information management and systems

Design, select and introduce ERP / PPS / MES / WMS systems and improve IT systems

■ Logistics roadmap

Monitor the ongoing development of logistics performance to achieve strategic objectives



Structure and organise projects

Compare project strategy and corporate strategy. Assess the project using indicators, develop project structure and organisation, extrapolate quality gates, specify management tools.

Manage projects

Show projects as a process chain and manage efficiently.

■ Project management and control

Deadline management, interface management, communication and documentation management, finance and quality objective management

■ Contract, claim and risk management

Scope monitoring, reactive and proactive claim management, risk analysis and risk management

■ Relocation management

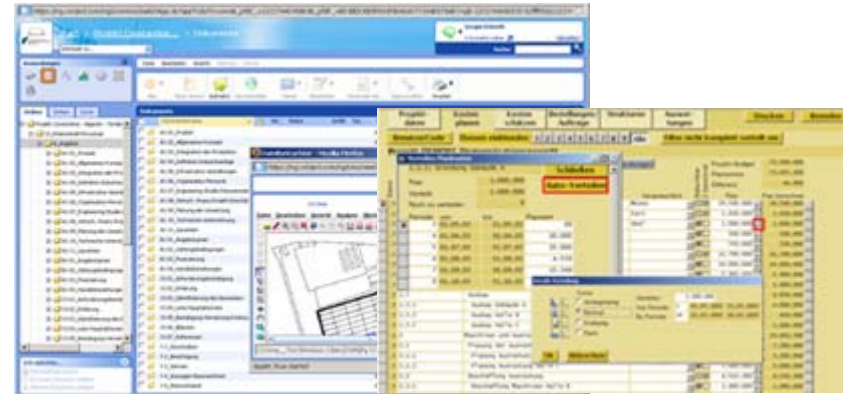
Scheduling and scenarios, layout planning, bids, onsite management

■ Commissioning and start-up performance

Start-up planning, teams, test planning, managing equipment approvals

■ Temporary management

Project management, representing the developer, transfer of line responsibility



Promote business strategically

Advice and support for business subsidy and structure policy institutions to strategically develop the location.

- **Location development and marketing**
Strategic business development for federal states, regions, cities and area
- **Clusters and networks**
Develop cluster strategies; set up, manage and secure the ability of clusters to support themselves
- **Local economies**
Integrated development of districts and programme areas with special development requirements

Manage politics and administration efficiently

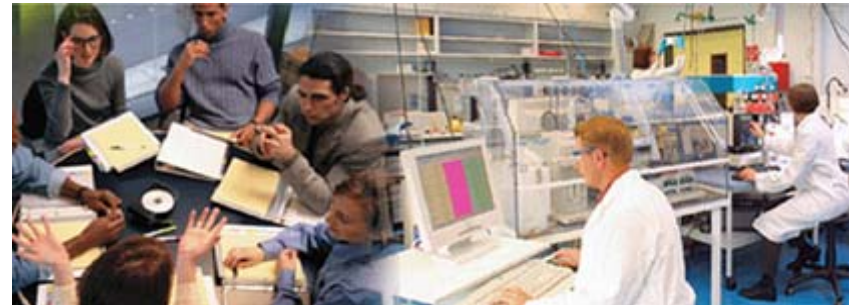
Tailor-made solutions for cost and organisation issues from restructuring at a departmental level to challenging large-scale projects.

- **Subsidy management**
Programme and project management, IT systems, monitoring, PR work, evaluation
- **Finding business and project management**
Implementation support by finding business for the public sector, project and programme management

EnergieAgentur.NRW 

Ziel2.NRW
Regionale Wettbewerbsfähigkeit und Beschäftigung

EF A
Effizienz-Agentur NRW



Prize-winning projects

Mercedes-Benz España S. A. - Planning vehicle assembly

European Logistics Prize awarded by the European Logistics Association (ELA)

Schmitz Cargobull - Introduction of new assembly structures

Factory of the year - excellent production technology

Villeroy & Boch AG - New construction of a European logistics centre

Architecture Prize by the WestHyp Foundation for the logistics centre in Merzig

K. L. Airport Services (KLAS), Kuala Lumpur – New construction of air freight centre

Awards for the innovative use of steel within the supporting structure and the roof design as a separate element

Karstadt Warenverteilzentrum Unna - Planning and implementation

German logistics prize awarded by the Bundesvereinigung Logistik (BVL - Federal Logistics Association)

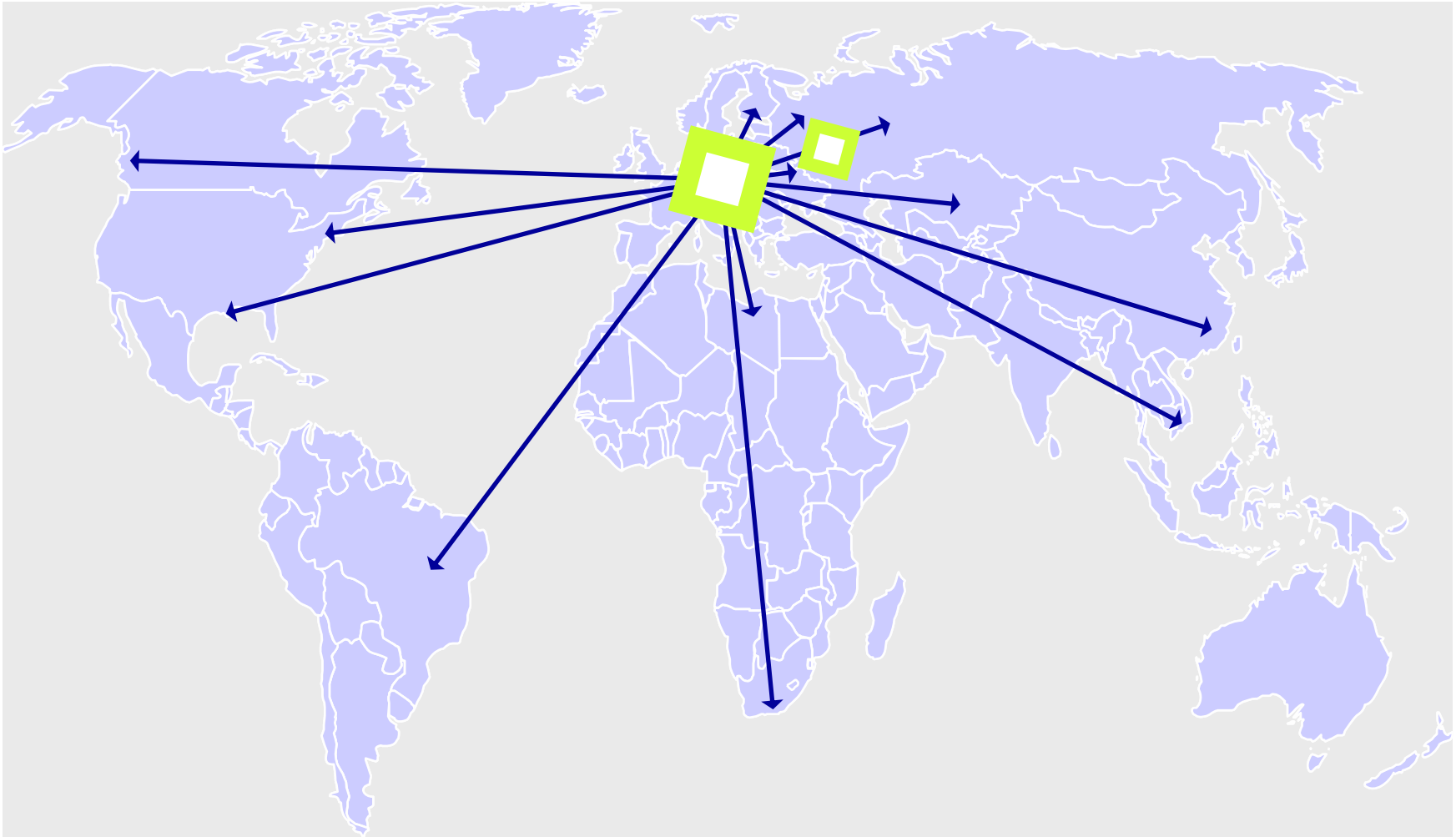
The MFK Prize was given to the presentation "**Logistics centres for stationary trading, comparison of various automation levels**"



Industries and customers

Automotive	Audi BMW Daimler Ford Hyundai Karmann Mercedes-Benz Opel Porsche Proton Rolls-Royce Skoda Smart UAZ Volkswagen
Automotive suppliers	Alcan Singen AVL BorgWarner BÖCO Continental DEUTZ Dynamit Nobel GRAMMER HONSEL ISRINGHAUSEN Johnson Controls Magna Steyr Mahle Robert Bosch Seton Webasto ZF Friedrichshafen
Goods vehicles	DOLL EvoBus Iveco LADOG Langendorf HIL Intrall John Deere Kögel Krone MAN Nutzfahrzeuge Mercedes-Benz Schmitz Cargobull UAZ Joseph Vögele Volkswagen
Plant/mechanical engineering	Aixtron Atlas Weyhausen BeA Beumer Faiveley GEA Heidelberg Lemken MAN Diesel MAN Turbo MTU Scholz SMS Meer TAKRAF Vossloh Locomotives
Consumer goods	B/S/H/ Collonil DHL Dornbracht Electrolux Gambro Karstadt Kusch Müller OKT Optipack Wenco Woolworth
Construction industry	Ewald Dörken PFEIFFER DRAKO Kaldewei Philippine SIEGENIA-AUBI Schneider Electric Simonswerk
Process industry	Arcelor Bayer Lenord + Bauer Mittal Pfeiderer SCA Schott Siegwerk SGL CARBON ThyssenKrupp
Engineering technology	Conergy ersol Deutsche Solar Scheuten Solar Schott Solibro / Q-Cells Maschinenfabrik Reinhausen Siemens Energy SGB Starkstrom Gerätebau
Public & private sector	awb nordstadt (DO) NRW-Target 2 programme secretariat competence network fuels and drives of the future Cities: Aachen Duisburg Essen Cologne Osterode NiederRhein Wilhelmshaven Wuppertal





**agiplan is represented in the Russian Federation with an office in Moscow.
An extensive network allows us to collaborate with local partners.**



Collaborate with partners



Manage interest clusters

Exchange experience



agiplan



Work with science

Logistics / IT



Factory planning project management



An overview of agiplan



Established	1961 in Essen as Aktiengesellschaft für Industrieplanung
Services	Industrial Consulting Public Management
Industries	Automotive, equipment and mechanical engineering, process industry, consumer goods, energy / solar technology, construction suppliers, business subsidies, public sector
Employees	130 agiplan GmbH and prisma consult GmbH
Turnover	€17.1 million agiplan GmbH and prisma consult GmbH
Projects	More than 5,500 projects, 80 per year
Management	Dr. Christian Jacobi (GF) Heiko Barth, Dr. Jürgen Bischoff, Peter Groos, Christian Koch, Lothar Schneider
Collaboration	aib agiplan integrale bauplanung gmbh SDZ SimulationsDienstleistungsZentrum GmbH swjplan GmbH SIP Projektmanagement
Certification	DIN EN ISO 9001:2000
Regional court	Duisburg HRB 16389

agiplan GmbH
Kölner Straße 80 - 82
45481 Mülheim
+49(0)208 / 99 25-0

agiplan GmbH
Curiestraße 2
70563 Stuttgart
+49(0)711/ 67 400 202

swjplan GmbH
Stiglmaierplatz/
Dachauer Straße 37
80335 München
+49(0)89 / 54 55 80



agiplan LLC

3rd Yamskogo Polya, 18
125040 Moscow
+7 495 787 0190



SIP Engineering Consulting Ltd.

13/F, Block E, Golden Hong
Qiao Commercial Plaza
686, Wu Zhong Rd
Shanghai 201103

www.agiplan.de